

SKR600

Electronic RFID & Keypad Door Lock

Operation Manual

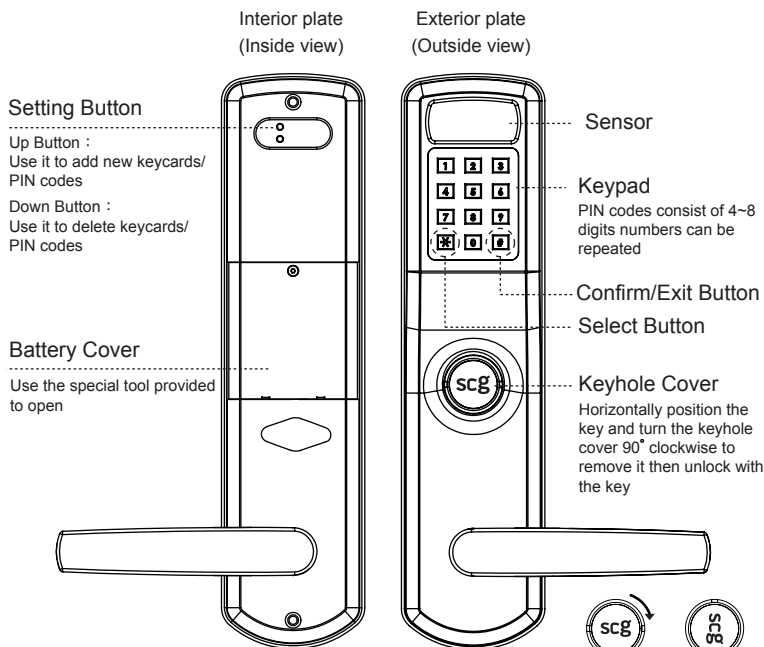


SKR600 Specification

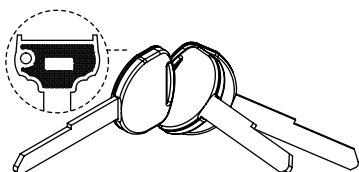
- ▲ Dimension -- Panels : 290(H) x 70(W) x 72 (D)-(mm)
- ▲ Approximate Weight : 4520 g
- ▲ Door Thickness : 45mm ~ 55mm
56mm ~ 80mm
- ▲ Standard US Mortise Lockbody
- ▲ Use 4AA Alkaline batteries (1.5V) **(not included)**
- ▲ Others : RFID Sensor
Digital Pad (Metal & Waterproof)
- ▲ Temperature : -10 °C ~ 70 °C

Product Overview

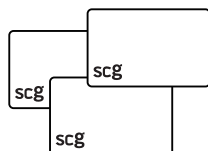
* The picture is for reference only. Please check the actual model for specific functions.



--Accessories--



Emergency Override Key
3 keys provided per lock



RFID Keycards

Unlocking Methods

1. Mechanical Key : Horizontally position the key and turn the keyhole cover 90 degrees clockwise to remove it then unlock with the key.
2. Keycard : Press any button to enter the system, simply place the RFID card to the sensor.
3. PIN Code : Press any button to enter the system, enter assigned PIN code and press # to confirm.
4. Passage Mode : Place the RFID card to the sensor or enter assigned PIN code and press * # * . Press # to lock.

Door Lock Status

Status	Light	Sounds
Operation Successful	Blue	1 beep
Operation Failed	Red	3 beeps
Enter/ Exit Setup Mode	Blue / Red	2 beeps
Low Battery	Red	5 continuous beeps
Door Opened Indication	1 beep after the right Keycard or PIN code that the lock is open.	
Door Closed Indication	After depressing the lever, the door is locked 1.5 seconds after the lever comes back to the horizontal position.	

Types of No.

Type	Quantity	Function	No.	Instruction
Administrator	4 sets	Add/Modify/Delete	*00~03	Unlocking Keycards or PIN codes.
User	94 sets	Unlock the door	*04~97	
Single-Entry User	1 set	Can be used only once	*98	Keycards or PIN codes be used only once.
Volume	1 set	Sound volume	*99	

Notice

- The factory default admin. PIN code is 123456. It is highly recommended to change the code upon installation of the lock.
- Only one PIN code or one Keycard can be set per No. of location.
- Please turn to the last page to restore to the factory default settings.
- There is no need to reset after battery replacement with the memory function.
- It can't enter the setup mode during passage mode.

PIN Code/ RFID Keycard Setup

⊙ Administrator Setup

- Enter the Setup Mode
 - Administrator Recognition
 - Press the No. *00~*99
 - Enter the Intended PIN Code or Card
 - Exit Setup Mode
- First time setup
- Input the factory default admin. PIN code (123456) and then press # to confirm.
- Admin. already setup
- Input admin. PIN code and then press # to confirm or position the admin. card to the sensor.
- Press the Up Button on the back of the lock for 2 seconds until hear two beeps.
- Press the No. *00/ *01
*02/ *03
- Enter the intended admin. PIN code (consists of 4-8 digits), and then press # to confirm or position the admin. card to the sensor.
- # 5

⊙ User Setup

- Press the Up Button on the back of the lock for 2 seconds until hear two beeps.
- Input admin. PIN code and then press # to confirm or position the admin. card to the sensor.
- Press the No. *04 ~ *97
- Enter the intended PIN code (consists of 4-8 digits), and then press # to confirm or position the card to the sensor.
- # 5

⊙ Single-Entry User Setup

- Press the Up Button on the back of the lock for 2 seconds until hear two beeps.
- Input admin. PIN code and then press # to confirm or position the admin. card to the sensor.
- Press the No. *98
- Enter the intended PIN code (consists of 4-8 digits), and then press # to confirm or position the card to the sensor.
- # 5

Notice

- The admin. and user PIN code cannot be 000000/111111/123456.
- Blue light flashes if the NO. has been setup.
- 3 beeps (red light) mean failed operation.
- The system exit setup mode without any action over 5 seconds, two beeps (blue light).

Other Setup

⊙ User Deletion

- Enter the Setup Mode
 - Administrator Recognition
 - Enter
 - Exit Setup Mode
- Press the Down Button on the back of the lock for 2 seconds until hear two beeps.
- Input admin. PIN code and then press # to confirm or position the admin. card to the sensor.
- Enter the No. you intend to delete (*01 ~ *97), and then press # to confirm or position the card.
- # 4

⊙ Volume Setup

- Enter the Setup Mode
 - Administrator Recognition
 - Press the No.
 - Enter
 - Exit Setup Mode
- Press the Up Button on the back of the lock for 2 seconds until hear two beeps.
- Input admin. PIN code and then press # to confirm or position the admin. card to the sensor.
- Press the No. *99
- Press 00(mute), 01(low), 02(medium) or 03(loud), and then press # to confirm.
- # 5

⊙ All User Deletion

- Press the Down Button on the back of the lock for 2 seconds until hear two beeps.
- Input admin. PIN code and then press # to confirm or position the admin. card to the sensor.
- Press the Down Button on the back of the lock for 5 seconds until hear a continuous beep and two short beeps mean successful reset.
- # 4

⊙ Factory Default Setting

- Remove one battery.
- Next, while continuously pressing the two buttons on the back, reinstall the battery.
A continuous beeps (red light) and a short beep (blue light) after successful operation.

⊙ Troubleshooting

Problem	Indication
Continuous beeps after successful operation	Low battery alert. Replace the battery immediately.
No reaction when entering Keycards/ PIN codes	Battery is dead. Please use the key to unlock.
	Consecutive Keycards/PIN codes entry errors. Please try again after 1 minute.
Light doesn't go off	Replace batteries.

⊙ Important Notes

- If the card is losing, please delete right away.
* Notice : The administrator (*00) can't be deleted individually.
- Please use alkaline batteries only.
- To preserve the cleanliness of the product, wipe it down using a clean cloth.
Do not use alcohol or other chemical agents.
- Please handle the lock carefully to ensure normal operation.
- If you encounter any problem, please refer to the user manual first. If you still have questions, please feel free to contact us or email us.